



Recording Wiltshire's Wildlife



Particular Interests

You may be particularly interested in a particular species group for example birds, plants, fungi or beetles and may want to focus your attention on this species group to begin with and you may want to get involved with one of the national or local recording groups whose details are given below.

You can carry out specific surveys for individual species or groups of species. Invertebrate sampling of rivers, live trapping small mammals and using quadrats to sample vegetation are all examples of specific surveys.

Amphibians & Reptiles:

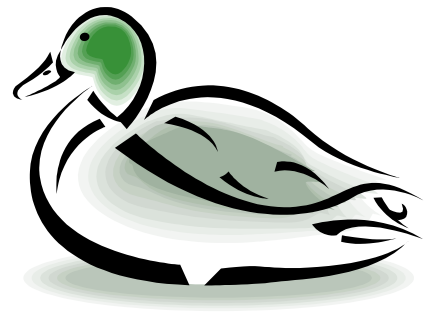
- ❖ Wiltshire Amphibians & Reptile group
Email: WiltshireARG@hotmail.co.uk
- ❖ Amphibian & Reptile Group
Website: www.arg-uk.org.uk



Birds:

- ❖ Wiltshire Ornithological Society
Website: www.wiltshirebirds.co.uk
- ❖ Royal Society for the Protection of Birds
The RSPB
The Lodge
Sandy
Bedfordshire
SG19 2DL
United Kingdom
Tel: 01767 680551
Website: www.rspb.org.uk
- ❖ Local RSPB Groups:

North Wiltshire - Derek Lyford
Tel: 01793 520997
E-mail: derek.lyford@virgin.net
Website: www.RSPB.org.uk/groups/northwiltshire



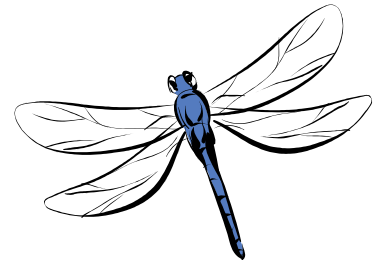
South Wiltshire - Tony Goddard
Tel: 01725 510309
E-mail: goddard543@hotmail.com
Website: www.RSPB.org.uk/groups/southwiltshire

Invertebrates: There are far too many groups to list here. We have county recorders in Wiltshire who specialise in the following areas; Spiders, Grasshoppers & Crickets, Hoverflies & Woodlice, Sawflies, Beetles and Ants, Bees & Wasps. If you are interested in recording any of the species groups then please contact the relevant county recorder on the sheet included and they will be happy to advise you.

❖ Wiltshire Dragonflies and Damselflies
Email: www.wiltshiredragonflies.org.uk

❖ Royal Entomological Society
41 Queen's Gate
London
SW7 5HR

Tel: 020 7584 8361
Fax: 020 7581 8505
Website: www.royensoc.co.uk



❖ Buglife-The Invertebrate Conservation Trust
170A Park Road
Peterborough
CAMBS
PE1 2UF
Tel: (0)1733 201 210
Email: info@buglife.org.uk
Website: www.buglife.org.uk

Butterflies:

❖ **Butterfly Conservation**
Website: www.butterflyconservation.org.uk
Email:
Address:



Moths:

Contacts:
See butterfly.

Mammals:

❖ **Wiltshire Badger Group**

Website: www.wiltshirebadgergroup.org.uk

Email: info@wiltshirebadgergroup.org.uk

❖ **Wiltshire Mammal Group**

Email: wiltshiremammalgroup@hotmail.co.uk

❖ **Mammal Trust UK**

15 Cloisters House,
8 Battersea Park Road,
London SW8 4BG

E-mail: enquiries@mtuk.org

Tel: (+44) 020 7498 5262

Fax: (+44) 020 7498 4459

Website: www.mtuk.org

❖ **Mammal Society**

2B, Inworth Street
London SW11 3EP

Tel: 020 7350 2200 between 11am and 1pm on weekdays

Fax: 020 7350 2211

Website: www.abdn.ac.uk/mammal/

Bats:

NB: It is an offence for anyone who does not hold a bat license to intentionally disturb



○ **Wiltshire Bat Group**

Email:

shlawrence@aol.com

○ **The Bat Conservation Trust**

Unit 2, 15 Cloisters House
8 Battersea Park Road
London SW8 4BG

Tel: 020 7627 2629

Fax: 020 7627 2628

Website: www.bats.org.uk

Flowering Plants:

❖ **Wiltshire Botanical Society**



For further details of events please contact:
Pat Woodruffe,
Tel: 01794 884436

For details of membership please contact:
Rosemary Duckett,
Tel: 01373 858296
Website: www.communicate.co.uk/wilts/wiltshirebotanicalsociety/

- ❖ **The Botanical Society of the British Isles**
Website: www.bsbi.org.uk

- ❖ **Plantlife International**
The Wild-Plant Conservation Charity
14 Rolleston Street
Salisbury
Wiltshire
SP1 1DX
UK

Tel: +44 (0)1722 342730
Fax: +44 (0)1722 329035
e-mail: enquiries@plantlife.org.uk

Website: www.plantlife.org.uk



Fungi:

- ❖ **British Mycological Society,**
The Wolfson Wing,
Jodrell Laboratory,
Royal Botanic Gardens,
Kew,
Surrey
TW9 3AB

Email: admin@britmycolsoc.info
Website: www.britmycolsoc.org.uk

See Plantlife International in Plants section

Lichens:

- ❖ **The British Lichen Society,**
c/o Dept. of Botany,
The Natural History Museum,
Cromwell Road,

London SW7 5BD
Tel: 0207 942 5250
Email: bls@nhm.ac.uk
Website: www.thebls.org.uk

This list is by no way exhaustive and if you are interested in recording a group of species that are not mentioned please contact the WSBRC.

For more information on recording in Wiltshire please visit the WSBRC website at www.wsbrc.org.uk.